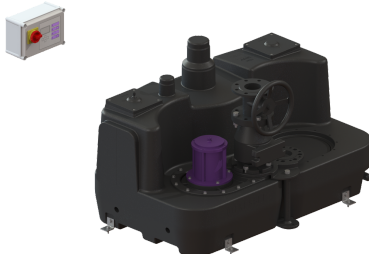


## Lifting stati. Aqualift F XL 300l Mono, SPF 3000-S3, Cast-iron shut-off val



### Article information

Item no.: 11051  
 GTIN: 4026092057186  
 Price group: 50

### Advantages

- Different performance classes available
- Pressure sensor for reliable pneumatic level measurement
- Maximum operating reliability due to intelligent control unit (Duo)

### Description

The lifting station for faecal and faecal-free wastewater is equipped with one or two submersible pumps and a backflow preventer. The collection tank made of permanently resistant polymer (PE) offers universal connection options and has a screwed access cover.

#### Variant

Type of system:	Single unit
Shut-off valve:	Shut-off valve made of cast iron
Pressure pipe connection:	vertical

#### General characteristics

Colour:	black
Standard:	EN 12050-1
Type of wastewater:	with sewage
Installation situation:	free-standing installation
System type:	Mono

#### Dimensions

Net weight:	129,86 kg
Gross weight:	149,86 kg
Packaging dimension:	length
Packaging dimension:	width
Packaging dimension:	height

#### Tank/drain body

Tank volume:	300 l
--------------	-------

#### Pumping device

Pump:	SPF 3000
Number of pumps:	1
Length of mains cable for pump:	5 m
Operating mode:	S3 - 50 %
Impeller type:	Multi-vane impeller
Free passage:	40 mm
Control	
Control unit:	Comfort
Level measurement instrument:	Immersion pipe
Type of level measurement:	pneumatic
Mains frequency:	50 Hz
Operating voltage:	400 V