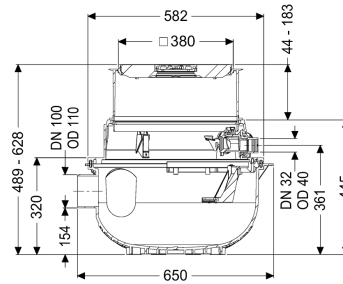


## Shell Kit for Aqualift S Compact blanc. GTF500 Mono



### Article information

Item no.: 280500S-RBK

GTIN: 4026092106907

Price group: 20

### Description

For combination with a KESSEL technology kit for creating a Mono lifting station for wastewater without sewage with a GTF500 wastewater pump.

The ready to plug in lifting station for wastewater without sewage is equipped with a submersible pump and a backflow preventer. The collection tank made of permanently resistant polymer (PE) has an open pump tank. One-handed closures enable easy removal of the integrated components. The system for installation in the floor slab is pre-assembled for final installation on site.

### KESSEL shell kit consisting of:

- With vertically adjustable upper section for continuous height and level compensation and integrated floor drain
- PE collection tank, resistant to aggressive wastewater and 3 m groundwater
- Includes backflow preventer for the pressure pipe
- Includes connection socket for inlet and conduit pipe

### Variant

Type of system:	Single unit
Pump control:	Float switch
Backflow preventer:	integrated

### General characteristics

Colour:	black
Standard:	EN 12050-2

Type of wastewater: without sewage  
Installation situation: floor slab installation  
Delivery state: Installation-ready (connection parts must be connected on site)

#### Dimensions

Net weight: 21 kg  
Gross weight: 21 kg  
Groundwater resistant from lower edge of base section: 3000 mm  
Installation depth: 490 - 620 mm  
Type of height adjustability: vertically adjustable upper section  
Length: 617 mm  
Width: 585 mm  
Packaging dimension: length  
Packaging dimension: width  
Packaging dimension: height

#### Tank/drain body

Pressure pipe connection (DN): 32  
Pressure pipe connection (OD): 40 mm  
Inlet nominal size (DN): 100 mm  
Pumping volume: 16 l  
Tank volume: 65 l

#### Coverage features

Type of cover: Cover plate with slotted cover  
Cover material: Polymer  
Colour of cover: black  
Width of cover: 366 mm  
Length of cover: 366 mm  
Drainage function: yes  
Locking: Lock & Lift  
Load class: K 3 (EN 1253-1)  
Max. flooring height: 16 mm

#### Pumping device

Pump: GTF 500  
Number of pumps: 1  
Operating voltage: 230 V  
Max. pumping height: 8 m

#### Control

Operating voltage: 230 V