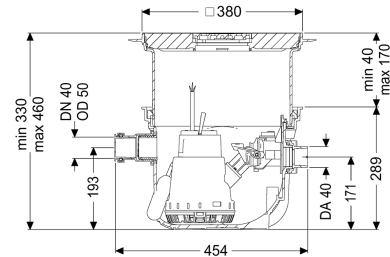


## Lifting station Minilift S KTP 300-S1, Floor slab, black



### Article information

Item no.: 280570S  
 GTIN: 4026092082553  
 Price group: 20

### Advantages

- Space-saving installation in the floor slab with integrated drainage function
- System ready to plug in
- Easy tool-free maintenance

### Description

The ready to plug in small lifting station for faecal-free wastewater is suitable for wastewater drainage of individual sanitary appliances. The submersible pump with float switch can be removed easily with the help of one-handed closures. The collection tank made of polymer (PE) has an open pump tank and is resistant to aggressive wastewater. The system for installation in the floor slab is preassembled for final installation on site.

#### Variant

Type of system:	Single unit
Pump control:	Float switch
Backflow preventer:	integrated

#### General characteristics

Colour:	grey
Standard:	EN 12050-2
Type of wastewater:	without sewage
Installation situation:	floor slab installation
Delivery state:	Installation-ready (connection parts must be connected on site)
ATEX:	no

#### Dimensions

Net weight:	10,97 kg
Gross weight:	12,1 kg

Installation depth:	330 - 460 mm
Length:	460 mm
Width:	380 mm
Packaging dimension:	length
Packaging dimension:	width
Packaging dimension:	height
Tank/drain body	
Pressure pipe connection (DN):	32
Pressure pipe connection (OD):	40 mm
Inlet nominal size (OD):	60 mm
Inlet nominal size (DN):	50 mm
Pumping volume:	7 l
Coverage features	
Type of cover:	Cover plate with slotted cover
Cover material:	Polymer
Colour of cover:	black
Width of cover:	366 mm
Length of cover:	366 mm
Locking:	Lock & Lift
Load class:	K 3 (EN 1253-1)
Pumping device	
Pump:	KTP 300
Number of pumps:	1
Connection type:	Schuko (earthed contact) 2-pin
Rated current:	1,6 A
Protection class (pump):	IP 68 (3m)
Temperature monitoring:	integrated
Max. temperature (permanent) of conveyed material:	40 °C
Hot water resistance for a short time (2 min):	80 °C
Max. pumping capacity:	8 m <sup>3</sup> /h
Max. pumping height:	6 m
Speed:	2800 U/min
Power P1:	0,34 kW
Power P2:	0,21 kW
Operating mode:	S1
Type of fuse required (electrical protection):	C 16 A
Type of pump connection cable:	H07RN-F 3G 1.5 mm <sup>2</sup>
Impeller type:	Multi-vane impeller
Free passage:	10 mm
Length of mains cable for pump:	5 m
Control	
Mains frequency:	50 Hz
Operating voltage:	230 V
Connection type:	Schuko (earthed contact) 2-pin
Type of fuse required (electrical protection):	C 16 A