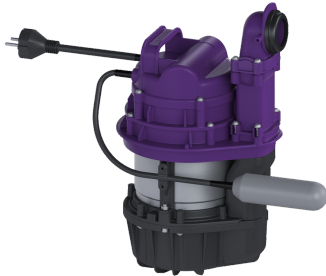


## Technology kit Aqualift S Comp GTF1200Res Mon fl.switch



### Article information

Item no.: 281200C-TK  
 GTIN: 4026092108130  
 Price group: 20

### Description

For combination with a KESSEL shell kit for creating a Mono lifting station for wastewater without sewage with a GTF1200 wastewater pump.

The ready to plug in lifting station for wastewater without sewage is equipped with a submersible pump and a backflow preventer. The collection tank made of permanently resistant polymer (PE) has an open pump tank. One-handed closures enable easy removal of the integrated components. The system for installation in the floor slab is pre-assembled for final installation on site.

### KESSEL technology kit consisting of:

- Pump with multi-vane vortex impeller for maximum operating safety
- Resistant to saline media, wastewater from water softening systems and wastewater containing condensate from heating systems
- Includes float switch for level measurement

#### Variant

Type of system:	Single unit
Resistant:	Resistant to saline media, wastewater from water softening systems and wastewater containing condensate from heating systems
Pump control:	Float switch

#### Dimensions

Net weight:	9,75 kg
Gross weight:	10,54 kg
Packaging dimension:	length
Packaging dimension:	width
Packaging dimension:	height

#### Tank/drain body

Pumping volume:	16 l
-----------------	------

Pumping device	
Pump:	GTF 1200 resistant
Number of pumps:	1
Weight, pump:	10 kg
Connection type:	Schuko (earthed contact) 2-pin
Rated current:	6,2 A
Protection class:	I
Insulation class:	F
Protection class (pump):	IP 68 (3m)
Temperature monitoring:	integrated
Max. temperature (permanent) of conveyed material:	40 °C
Hot water resistance for a short time (2 min):	80 °C
Max. pumping capacity:	15,5 m <sup>3</sup> /h
Max. pumping height:	9 m
Speed:	2650 U/min
Power P1:	1,4 kW
Power P2:	0,84 kW
Operating mode:	S3 - 10 %
Type of fuse required (electrical protection):	C 16 A
Type of pump connection cable:	H07RN-F 3G 1.5 mm <sup>2</sup>
Impeller type:	Multi-vane impeller
Free passage:	30 mm
Length of mains cable for pump:	5 m
Control	
Level measurement instrument:	Float switch
Type of level measurement:	mechanical
Mains frequency:	50 Hz
Operating voltage:	230 V
Connection type:	Schuko (earthed contact) 2-pin
Type of fuse required (electrical protection):	C 16 A