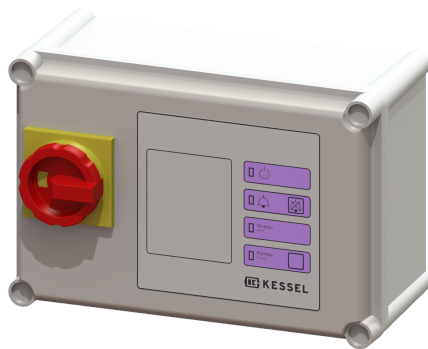


Comfort control unit 400V, Aqualift Mono, 6.3-10.0 A



Article information

Item no.: 28781
 GTIN: 4026092058732
 Price group: 20

Advantages

- Self-diagnosis system (SDS)
- Potential-free contact for faults/warnings
- Reminder for when maintenance is due

Description

Komfort control unit for lifting stations or pumping stations. Suitable for 400 V single stations. Optional connection option for float switches, conductivity probes and level probe on the terminal strip. User-friendly menu navigation in multi-line display. Menu navigation in six languages. Simple selection of the system to be connected with preset, system-specific operating parameters. Display of the current measured values. Simple adjustment of the function-related parameters, with integrated operating hour counter. With self-diagnosis system (SDS) for monitoring pump, sensors and battery back-up. Improper installation or operating faults trigger an optical and acoustic alarm signal. Forwarding of a collective fault and alarm signals via optional potential-free contact or integrated serial interface for GSM modem.

Variant

Series: ab 03/2010
 Type of system: Single unit

General characteristics

Colour: grey
 System type: Mono

Dimensions

Net weight: 3,17 kg
 Gross weight: 3,83 kg
 Packaging dimension: length
 Packaging dimension: width
 Packaging dimension: height

Control

Control unit: Comfort
 Motor protection switch: yes
 Protection class control unit: IP 54

Potential-free contact:	yes
GSM interface:	yes
USB interface:	no
Log book function:	yes
Multi-line display:	yes
Battery buffering:	yes
Self-diagnosis system (SDS):	yes
Rated current:	6,3 - 10 A