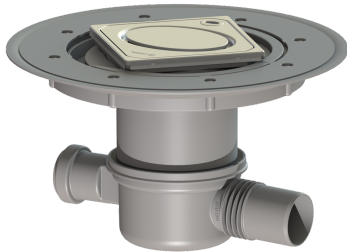


## The Superflat bathroom drain Variofix, DN50, slotted cover



### Article information

Item no.: 42701.50  
 GTIN: 4026092028605  
 Price group: 10

### Advantages

- Movable outlet socket
- Lip seal fixed on the drain body
- Side inlet via odour trap

### Description

The Superflat bathroom drain is suitable for indoor floor drainage. The drain made of PP is equipped with a secure, reliably installed seal as well as a removable odour trap.

#### Variant

Waterproofing layer on the upper section:	Enclosed sealing collar to be glued (bd) according to DIN 18534
Sealing water height:	30 mm
Discharge rate (l/s) with 20 mm threshold:	0,8

#### General characteristics

Nominal size (DN):	50
Outer diameter (OD):	50 mm
Odour trap:	included

#### Dimensions

Vertical adjustment:	10 - 23 mm
Net weight:	1,35 kg
Gross weight:	1,59 kg
Cutout dimension, width:	180 mm
Cutout dimension, length:	260 mm
Type of height adjustability:	vertically adjustable upper section
Length:	312 mm
Width:	312 mm
Packaging dimension:	length
Packaging dimension:	width
Packaging dimension:	height

#### Tank/drain body

Number of outlets:	1
Inlet nominal size (DN):	40 mm

Number of inlets:	1
Material of drain body:	PP
Coverage features	
Type of cover:	Slotted cover
Cover material:	Stainless steel 14301
Colour of cover:	silver
Width of cover:	95 mm
Length of cover:	95 mm
Surface:	Polished SST
Frame material:	Stainless steel 14301
Locking:	placed
Load class:	K 3 (EN 1253-1)
Rim width:	132 mm
Rim length:	132 mm
Shape of upper section:	square
Upper section material:	PP