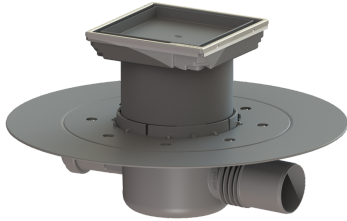


## The Superflat bathroom drain glued flange, DN 50, tileable



### Article information

Item no.: 42701.95  
 GTIN: 4026092029664  
 Price group: 10

### Advantages

- Movable outlet socket
- Lip seal fixed on the drain body
- Side inlet via odour trap

### Description

The Superflat bathroom drain is suitable for indoor floor drainage. The drain made of PP is equipped with a secure, reliably installed seal as well as a removable odour trap.

#### Variant

Sealing water height: 30 mm  
 Discharge rate (l/s) with 20 mm threshold: 0,8

#### General characteristics

Nominal size (DN): 50  
 Outer diameter (OD): 50 mm  
 Odour trap: included

#### Dimensions

Vertical adjustment: 25 - 90 mm  
 Net weight: 0,93 kg  
 Gross weight: 1,17 kg  
 Cutout dimension, width: 350 mm  
 Cutout dimension, length: 350 mm  
 Type of height adjustability: vertically adjustable upper section  
 Length: 332 mm  
 Width: 332 mm  
 Packaging dimension: length  
 Packaging dimension: width  
 Packaging dimension: height

#### Tank/drain body

Number of outlets: 1  
 Inlet nominal size (DN): 40 mm  
 Number of inlets: 1  
 Material of drain body: PP

**Coverage features**

Type of cover:	tileable cover plate
Cover material:	tileable
Colour of cover:	selectable
Width of cover:	110 mm
Length of cover:	110 mm
Frame material:	Stainless steel 14301
Locking:	placed
Load class:	K 3 (EN 1253-1)
Rim width:	110 mm
Rim length:	110 mm
Upper section material:	PP