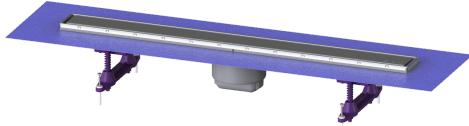


Upper section, Linearis Compact L: 750mm, Sys 100, 304 SST cover, K 3



Article information

Item no.: 47808S
 GTIN: 4026092077818
 Price group: 10

Advantages

- Individual design with reversible stainless steel insert
- Low installation depth
- Highest fire protection standards

Description

Used in combination with a drain body of the KESSEL 100 modular system, the Linearis Compact upper section is suitable for use as indoor linear drainage.

Variant

| | |
|--|---|
| System: | 100 |
| Seepage opening: | yes |
| Waterproofing layer on the upper section: | Enclosed sealing collar to be glued (bd) according to DIN 18534 |
| Water exposure class in accordance to DIN 18534-1 (up to and including): | W3-I |
| Sealing water height: | 50 mm |
| Discharge rate (l/s) with 10 mm threshold: | 0,6 |
| Discharge rate (l/s) without threshold: | 0,5 mm |

General characteristics

| | |
|----------------------|----------|
| Nominal size (DN): | 100 |
| Outer diameter (OD): | 100 mm |
| ATEX: | no |
| Odour trap: | included |

Dimensions

| | |
|--------------------------|-------------|
| Net weight: | 1,79 kg |
| Gross weight: | 2,55 kg |
| Outer dimension, length: | 815 mm |
| Installation depth: | 80 - 140 mm |
| Width: | 136 mm |
| Height: | 77 mm |
| Packaging dimension: | length |
| Packaging dimension: | width |

| | |
|-------------------------|-----------------------|
| Packaging dimension: | height |
| Coverage features | |
| Type of cover: | Stainless steel cover |
| Cover material: | Stainless steel 14301 |
| Colour of cover: | silver |
| Frame material: | Stainless steel 14301 |
| Load class: | K 3 (EN 1253-1) |
| Grating design: | optionally tileable |
| Rim width: | 66 mm |
| Rim length: | 750 mm |
| Upper section material: | ABS |