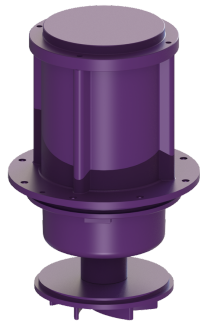


## Pump drive SPF 5500 E 400 V, S3, 5 m cable



### Article information

Item no.: 680727  
GTIN: 4026092095508  
Price group: 90

### Description

Pump drive with multi-vane impeller for faecal wastewater

#### General characteristics

ATEX: no

#### Dimensions

Net weight: 38 kg  
Gross weight: 40 kg  
Packaging dimension: length  
Packaging dimension: width  
Packaging dimension: height

#### Pumping device

Pump: SPF 5500 E  
Connection type: Direct connection  
Rated current: 9,1 A  
Protection class: I  
Protection class (pump): IP 68 (3m/48h)  
Max. temperature (permanent) of conveyed material: 40 °C  
Max. pumping height: 27 m  
Speed: 2840 U/min  
Power P1: 5,6 kW  
Power P2: 4,7 kW  
Type of pump connection cable: H07RN-F 7G 1.5 mm<sup>2</sup>  
Length of mains cable for pump: 5 m

#### Control

Mains frequency: 50 Hz  
Operating voltage: 400 V  
Connection type: Direct connection  
Rated current: 9,1 A