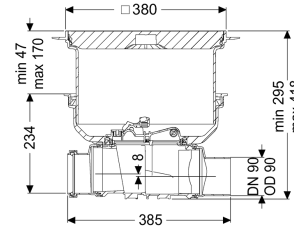


Staufix clean out DN 90, Floor slab, black



Article information

Item no.: 700090.10S
 GTIN: 4026092075869
 Price group: 10

Advantages

- Simple conversion to Staufix type 1
- Own gradient only 8 mm
- Quick and toolless access for cleaning

Description

The clean out for faecal and faecal-free wastewater makes easy access to wastewater pipes possible for inspection and maintenance work. Thanks to the modular KESSEL system, existing systems can easily be supplemented by up to two flaps and one emergency closure or be converted to the StaufixControl backwater valve.

General characteristics

Colour:	black
Nominal size (DN):	90
Outer diameter (OD):	90 mm
Type of wastewater:	for wastewater with and without sewage
Installation situation:	floor slab installation
Delivery state:	Installation-ready (connection parts must be connected on site)

Dimensions

Net weight:	6,3 kg
Gross weight:	8,9 kg
Groundwater resistant from lower edge of base section:	3 mm
Cutout dimension, width:	750 mm
Cutout dimension, length:	750 mm
Vertical drop between inlet and outlet:	8 mm
Installation depth:	287 - 410 mm
Type of height adjustability:	vertically adjustable upper section

Length:	444 mm
Width:	444 mm
Packaging dimension:	length
Packaging dimension:	width
Packaging dimension:	height

Coverage features

Type of cover:	Cover plate
Cover material:	Polymer
Colour of cover:	black
Width of cover:	366 mm
Length of cover:	366 mm
Locking:	Lock & Lift
Load class:	L 15 (EN 1253-1)
Tightness:	surface water resistant