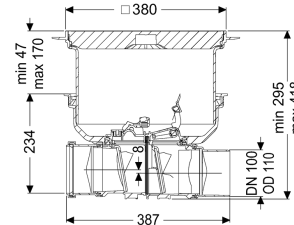


Backwater valve Staufix DN 100, Floor slab, black, Type 2



Article information

Item no.: 730100.10S
 GTIN: 4026092076361
 Price group: 10

Advantages

- Optional rat protection flap for additional safety
- Flexible installation, various covers available for floor slab installation
- Alternatively available as a module set

Description

The backwater valve for wastewater without sewage is equipped with two mechanical flaps which close automatically in the event of backwater. One flap serves as an emergency closure to be closed by hand. Thanks to the modular KESSEL system, existing systems can easily be converted to the StaufixControl backwater valve.

Variant

Stainless steel flap as rat protection:	no
Emergency closure:	yes
Mechanical backwater flaps:	2

General characteristics

Colour:	black
Standard:	EN 13564
Nominal size (DN):	100
Outer diameter (OD):	110 mm
Type of wastewater:	without sewage
Installation situation:	floor slab installation
Delivery state:	Installation-ready (connection parts must be connected on site)
Backwater protection:	Type 2

Dimensions

Net weight:	6,45 kg
-------------	---------

Gross weight:	9,9 kg
Groundwater resistant from lower edge of base section:	3 mm
Cutout dimension, width:	750 mm
Cutout dimension, length:	750 mm
Vertical drop between inlet and outlet:	8 mm
Installation depth:	287 - 410 mm
Type of height adjustability:	vertically adjustable upper section
Length:	444 mm
Width:	444 mm
Packaging dimension:	length
Packaging dimension:	width
Packaging dimension:	height

Coverage features

Type of cover:	Cover plate
Cover material:	Polymer
Colour of cover:	black
Width of cover:	366 mm
Length of cover:	366 mm
Locking:	Lock & Lift
Load class:	L 15 (EN 1253-1)
Tightness:	surface water resistant