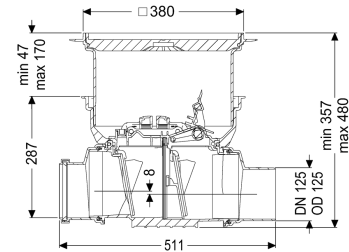


Backwater valve Staufix DN 125, Floor slab, tileable, Type 2 R



Article information

Item no.: 730125.10XR
 GTIN: 4026092076453
 Price group: 10

Advantages

- Optional rat protection flap for additional safety
- Flexible installation, various covers available for floor slab installation
- Alternatively available as a module set

Description

The backwater valve for wastewater without sewage is equipped with two mechanical flaps which close automatically in the event of backwater. One flap serves as an emergency closure to be closed by hand. Thanks to the modular KESSEL system, existing systems can easily be converted to the StaufixControl backwater valve.

Variant

Stainless steel flap as rat protection:	yes
Emergency closure:	yes
Mechanical backwater flaps:	2

General characteristics

Colour:	black
Standard:	EN 13564
Nominal size (DN):	125
Outer diameter (OD):	125 mm
Type of wastewater:	without sewage
Installation situation:	floor slab installation
Delivery state:	Installation-ready (connection parts must be connected on site)
Backwater protection:	Type 2

Dimensions

Net weight:	7,9 kg
-------------	--------

Gross weight:	10,5 kg
Groundwater resistant from lower edge of base section:	3 mm
Cutout dimension, width:	750 mm
Cutout dimension, length:	750 mm
Vertical drop between inlet and outlet:	8 mm
Installation depth:	341 - 464 mm
Type of height adjustability:	vertically adjustable upper section
Length:	511 mm
Width:	444 mm
Packaging dimension:	length
Packaging dimension:	width
Packaging dimension:	height
Coverage features	
Type of cover:	tileable cover plate
Cover material:	Polymer
Width of cover:	366 mm
Length of cover:	366 mm
Locking:	Lock & Lift
Load class:	K 3 (EN 1253-1)
Tightness:	surface water resistant
Max. flooring height:	16 mm