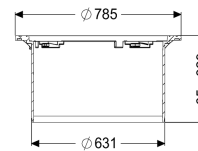
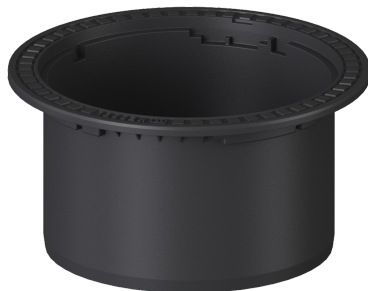


Upper Section LW 600 Polymer, height-adjustable 65 - 329 mm



Article information

Item no.: 860153
 GTIN: 4026092102497
 Price group: 60

Description

Upper section with clamping ring suitable for chamber system LW 1000/800/600 for surface water resistant class A/B or D covers with Lock & Lift, continuously height-adjustable by 264 mm (Komfort and engineering chamber system) or 250 mm (standard chamber system).

If installed in roads, parking areas and comparable hard-surfaced traffic areas for trucks (Class D), a reinforced supporting slab made of concrete must be laid under the upper section on site. A standard formwork and reinforcement drawing can be provided.

Access steps must be installed if the allowable difference between the top of the chamber cover and the first step is exceeded (art. no. 860109).

Minimum insertion depth: 80 mm (Komfort and engineering chamber system) or 94 mm (Standard chamber system and cisterns).

Dimensions

Net weight:	11,77 kg
Gross weight:	11,77 kg
Diameter:	785 mm
Adjustment range:	65 - 329
Height:	409 mm
Packaging dimension:	length
Packaging dimension:	width
Packaging dimension:	height

Coverage features

Cover material:

PP

Colour of cover:

black