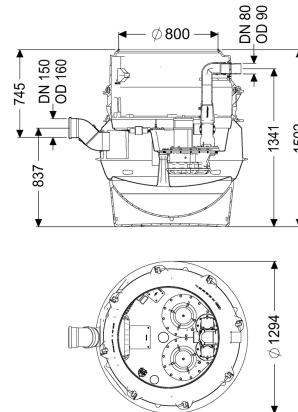


## Pumping station Aquapump XL Duo, SPF 1400-S3, D0



### Article information

Item no.: 8742016  
 GTIN: 4026092069523  
 Price group: 60

### Advantages

- Maximum safety
- Flexible installation
- Hygienic advantages for maintenance and repair

### Description

The pumping station for wastewater with and without sewage is equipped with one or two submersible pumps, a backflow preventer and a shut-off valve for the pressure pipe. The collection tank made of permanently resistant polymer (PE) has a closed pump tank (dry installation) with a screwed-on access cover. The station is controlled by a user-friendly control unit, which is optionally integrated in the building management system via a potential-free contact. Alternatively, alarm and collective fault messages can be output via a GSM interface. The KESSEL modular system provides different upper sections and engineering chamber options as accessories.

#### Variant

Note on installation depth:	Version with lowest installation height
Type of system:	duo pump
Shut-off valve:	Shut-off valve made of polymer
Access steps:	yes
Installation:	Dry installation
Pump control:	Control unit
Backflow preventer:	integrated
Pressure pipe connection:	horizontal

#### General characteristics

Colour:	black
Standard:	EN 12050-1
Type of wastewater:	with sewage

Installation situation: underground installation  
Delivery state: Pre-mounted for final assembly on site (pumps and sensor system must be fitted on site and control unit must be connected)

#### Dimensions

Net weight: 212 kg  
Gross weight: 235 kg  
Groundwater resistant from lower edge of base section: 3000 mm  
Length: 1295 mm  
Width: 1295 mm  
Height: 1500 mm  
Packaging dimension: length  
Packaging dimension: width  
Packaging dimension: height

#### Tank/drain body

Pressure pipe connection (DN): 80  
Pressure pipe connection (OD): 90 mm  
Venting connection (DN): 70  
Distance from centre of outlet pipe to tank bottom: 1343 mm  
Distance pipe bottom inlet to tank bottom: 753 mm  
Distance from centre of inlet pipe to tank bottom: 833 mm  
Distance from inlet pipe invert to top of tank: 747 mm  
Inlet nominal size (OD): 160 mm  
Inlet nominal size (DN): 150 mm  
Number of inlets: 1  
Clear width of tank (LW): 1000 mm  
Clear width of entry (LW): 800 mm  
Pumping volume: 160 l  
Tank volume: 335 l

#### Pumping device

Pump: SPF 1400-S3  
Number of pumps: 2  
Weight, pump: 25 kg  
Connection type: coded plug  
Protection class: I  
Insulation class: F  
Cos phi - power factor: 0,98  
Protection class (pump): IP 68 (3m/48h)  
Temperature monitoring: integrated  
Max. temperature (permanent) of conveyed material: 40 °C  
Max. pumping capacity: 38 m<sup>3</sup>/h  
Max. pumping height: 7 m  
Speed: 1370 U/min

Power P1:	1,6 kW
Power P2:	1,1 kW
Operating mode:	S3 - 50 %
Type of pump connection cable:	H07RN-F 3G 1.5 mm <sup>2</sup>
Impeller type:	Multi-vane impeller
Free passage:	40 mm
Length of mains cable for pump:	10 m
Rated current:	7,3 A

#### Control

Control unit:	Comfort
Alarm sensor:	Immersion pipe
Level measurement instrument:	Immersion pipe
Type of level measurement:	pneumatic
Protection class control unit:	IP 54
Operating voltage:	230 V
Connection type:	coded plug
Length of mains cable for control unit:	1,4 m
Potential-free contact:	optional
GSM interface:	yes
USB interface:	yes
Log book function:	yes
Multi-line display:	yes
Battery buffering:	yes
Self-diagnosis system (SDS):	yes