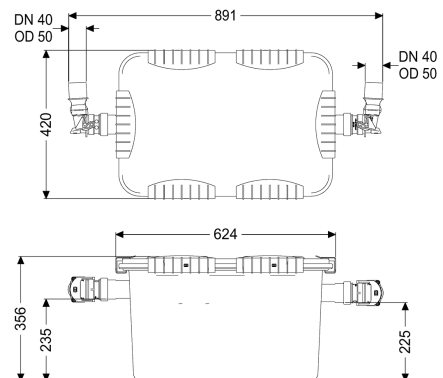
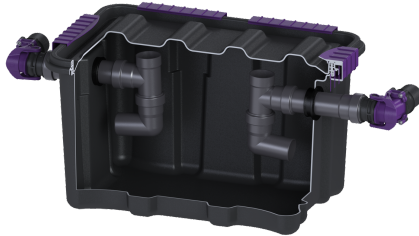


Grease separator EasyClean free UnderSink, NS 0,7



Article information

Item no.: 93070.00US
 GTIN: 4026092096857
 Price group: 60

Advantages

- Swivel connection
- no internal metallic components in the separator

Description

This separator for greasy waste water is suitable for freestanding installation in frost-protected rooms below a sink. Free of any metal components, the collecting tank is made of durable plastic (PP) equipped with an integrated sludge trap. An odor-tight lid with a wrap-around seal and closure clip allows easy access during manual emptying and cleaning. The separator also has quick-release pipe connections for easy removal, and an inspection window for on-site installation is available as an option for visually checking the thickness of the grease layer.

Variant

| | |
|---|--------|
| Seal: | yes |
| Sludge bucket: | no |
| Nominal size (NS): | 0,7 |
| Refill inlet in accordance with DIN 1988: | no |
| Type of disposal: | manual |
| Sampling device: | no |

General characteristics

| | |
|-------------------------|----------------------------------|
| Material: | PP |
| Installation situation: | free-standing installation |
| Delivery state: | Modular set for assembly on site |

Dimensions

| | |
|-------------------|--------|
| Net weight: | 5,9 kg |
| Gross weight: | 5,9 kg |
| Operating weight: | 38 kg |

| | |
|-------------------------------|--------|
| Empty weight: | 5 kg |
| Set-up area, length: | 891 mm |
| Set-up area, width: | 420 mm |
| Set-up area, height: | 356 mm |
| Required access area, length: | 624 mm |
| Packaging dimension: | length |
| Packaging dimension: | width |
| Packaging dimension: | height |

Tank/drain body

| | |
|---|--------|
| Distance pipe bottom outlet to tank bottom: | 225 mm |
| Distance pipe bottom inlet to tank bottom: | 235 mm |
| Outlet nominal size (OD): | 50 mm |
| Outlet nominal size (DN): | 50 mm |
| Inlet nominal size (OD): | 50 mm |
| Inlet nominal size (DN): | 50 mm |

Coverage features

| | |
|----------|--------------|
| Locking: | Clip closure |
|----------|--------------|

Wastewater contents

| | |
|------------------------------|-------|
| Separator contents: | 21 l |
| Max. grease layer thickness: | 57 mm |
| Total volume: | 33 l |
| Contents of sludge trap: | 12 l |
| Storage quantity of grease: | 8 l |