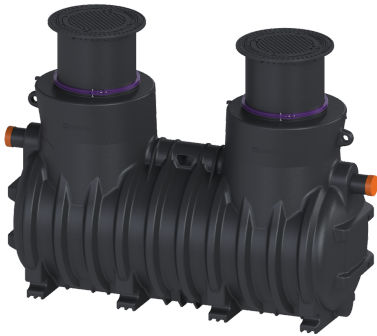


## EasyOil coalescence separator NS 10, Class I, 2600 l, B, In/outlet PE



### Article information

Item no.: 99710.15BEX

GTIN:

Price group: 60

### Advantages

- Permanent leak tightness up to ground level
- Resistant to and suitable for up to 100 % share of biodiesel (FAME)
- Suitable for filling stations with high-performance filling pumps, E10 and biodiesel fuels

### Description

The separator for light liquids is suitable for installation in the ground and is equipped with a removable coalescence insert. The collecting tank made of permanently resistant polymer (PE) is equipped with an integrated sludge trap and an automatic closure device. Two surface water resistant covers makes easy access possible for cleaning and maintenance work. A load distribution slab must be installed on site for load class D. The reinforcement drawings are available from KESSEL. 20 year polyethylene warranty.

#### Variant

Nominal size (NS):	10
Type of disposal:	manual with suction hose
Coalescence insert:	yes
Load-bearing capacity (DIN 19901):	E2

#### General characteristics

Separator class:	I
------------------	---

#### Dimensions

Net weight:	404 kg
Gross weight:	416 kg
Groundwater resistant from lower edge of base section:	1320 mm
Excess depth:	100 mm
DSC:	700 - 1.800
T-DSC:	155
Max. length:	3162 mm
Installation depth:	840 - 1240 mm
Required access area, length:	2910 mm

Required access area, width:	1200 mm
Packaging dimension:	length
Packaging dimension:	width
Packaging dimension:	height
Tank/drain body	
Distance pipe bottom outlet to tank bottom:	1070 mm
Distance pipe bottom inlet to tank bottom:	1110 mm
Outlet nominal size (OD):	160 mm
Outlet nominal size (DN):	150 mm
Inlet nominal size (OD):	160 mm
Inlet nominal size (DN):	150 mm
Connection inlet/outlet sockets:	PE-HD pipes in accordance with DIN 19537, PVC-KG pipes in accordance with DIN 19534, PP or AS
Clear width of entry (LW):	600 mm
Coverage features	
Type of cover:	Cover plate
Cover material:	Grey iron
Colour of cover:	black
Width of cover:	648 mm
Height of cover:	95 mm
Length of cover:	648 mm
Locking:	unlocked
Load class:	B 125 (EN 124)
Tightness:	odour-tight and surface water resistant
Wastewater contents	
Total volume:	2600 l
Contents of sludge trap:	1500 l
Storage quantity of light liquid:	267 l
Control	
Control unit:	no